

# MOSS COURT

Saltergate, Chesterfield S40 1GE



01246 297000

[www.a-rockconstruction.com](http://www.a-rockconstruction.com)

## MOSS COURT

Moss Court is a newly constructed development of luxury homes placed right in the heart of Chesterfield town centre. Situated on the historic route of Saltergate, the development consists of 10 luxury apartments, finished to a high standard and set in a beautiful courtyard and garden. The spacious apartments feature modern bathroom suites, fully fitted kitchens and appliances which have been chosen with the over 50's in mind.

## THE DEVELOPMENT

The development has been designed to meet the needs of our residents with lift access, comfort height bathroom suites and with ground floor accommodation available. The beautiful communal gardens provide access to well maintained outside spaces for the enjoyment of our residents. All apartments have an intercom system and the development is gated and protected by CCTV. Moss Court is perfect for tenants looking for a beautiful home with access to the town centre amenities and transport links right on your doorstep.

## TENANCY INFORMATION

All apartments are available with up to 2 years tenancy agreements and our bills-inclusive package gives residents piece of mind about their living costs.

The monthly charge is inclusive of the following:

- Rental charge
- Electricity and heating
- Water usage
- Communal area cleaning
- External window cleaning
- Grounds maintenance

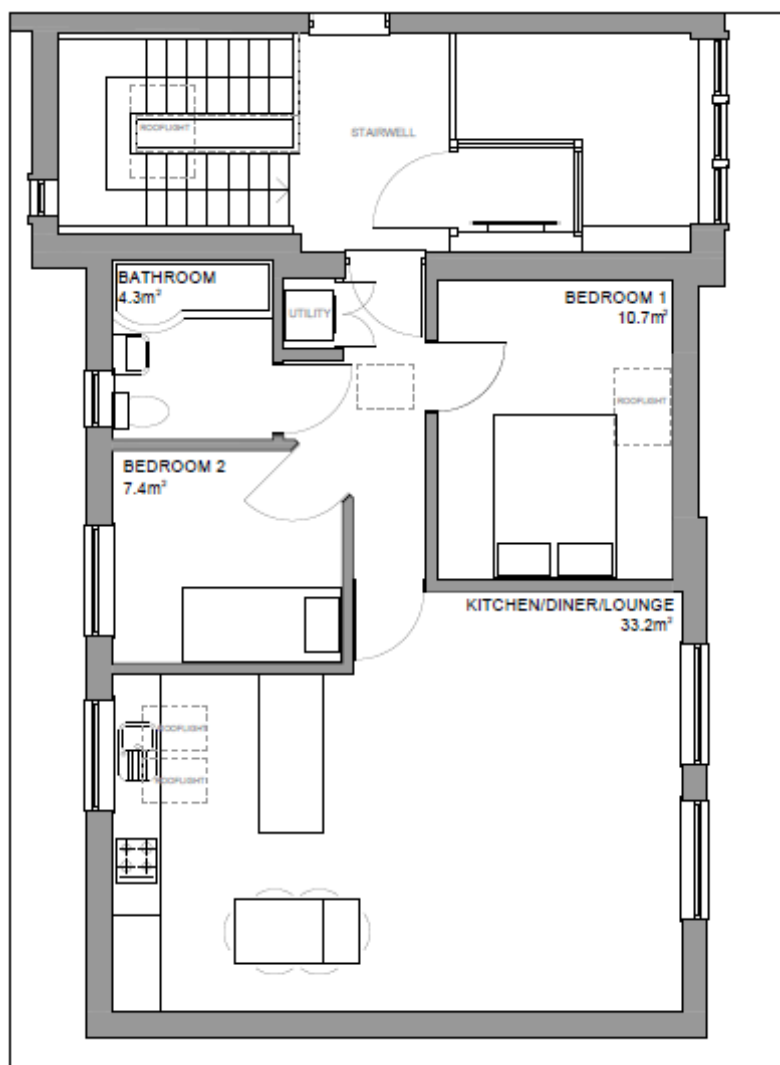


# £700 PER MONTH BILLS INCLUSIVE!

**Fully protected Government backed deposit scheme**

## FLAT 3 - 1 BEDROOM APARTMENT

- Second floor apartment
- 678 sq ft / 63 sq m
- Entrance Intercom system
- Fully fitted kitchen with breakfast bar
- Induction hob and extractor
- Electric fan oven
- Two spacious bedrooms
- Open plan living/dining area
- Modern bathroom with bath and shower
- Utility space



01246 297000

Managed by A-Rock Construction